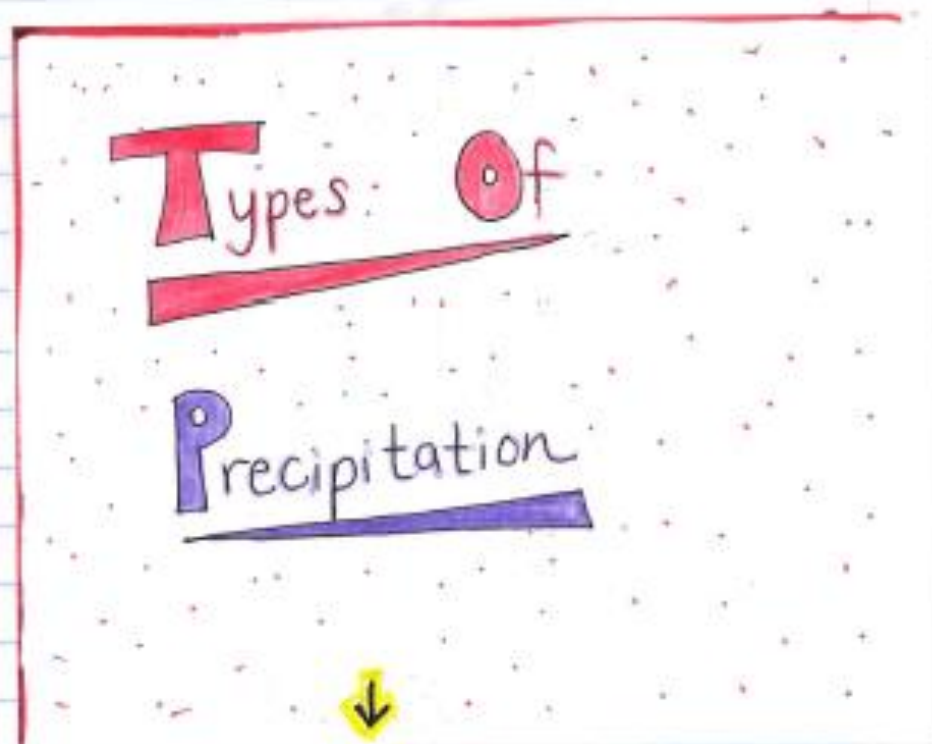


A B C5 L1 FOLDABLE
12/19/16 12/20/16



Weather Patterns

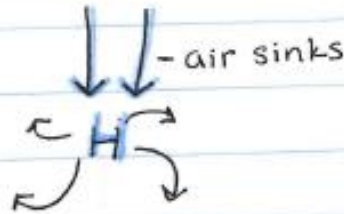
A
1/9/17

B
1/10/17

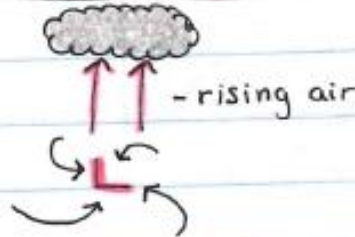
NOTES

C.5 L2 (P.173-181)

High Pressure



Low Pressure



FOCUS
SC.6.E.7.2

VOCAB
- Pressure system
- air mass
- front

Air Mass - large body of air with distinct temperature + moisture

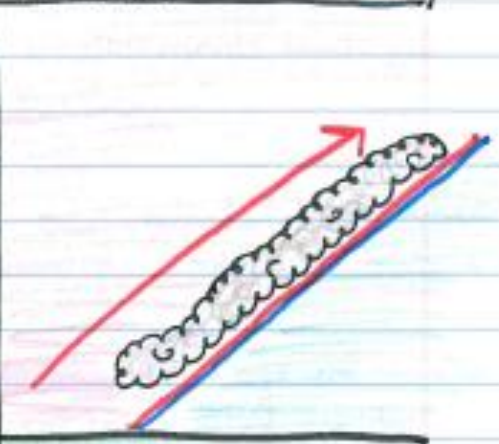
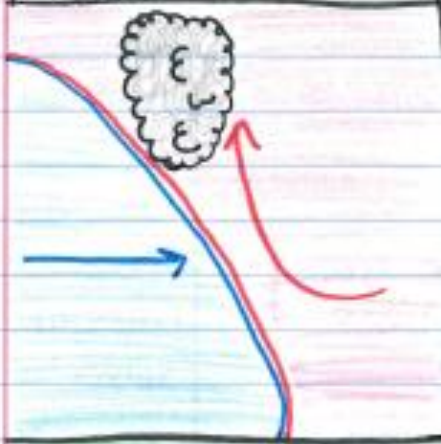
- ① Maritime Tropical - Wet, warm
- ② Maritime Polar - wet, cold
- ③ Continental Tropical - Dry, warm
- ④ Continental Polar - Dry, cold
- ⑤ Arctic - Very Cold, dry

Fronts - CSLZ

A
1/9/17

B
1/10/17

Cold Warm

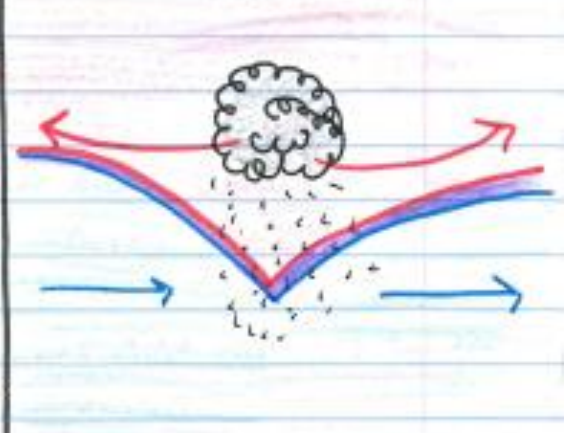
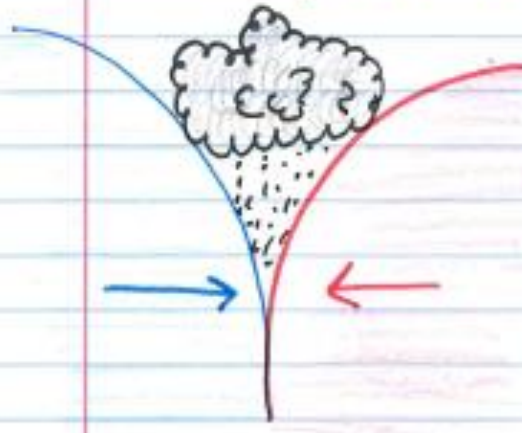


- showers/thunderstorms
- gusty wind

- wide blanket of clouds
- rain for hours/days

Stationary

Occluded



- cloudy
- light rain

- cold front catches up to warm
- precipitation

A B

1/11/17 1/12/17

FOCUS

SC.6.E.7.7

VOCAB

- surface report
- upper-air report
- Doppler radar
- isobar
- computer model

Weather Forecasts

NOTES

- surface report - describes a set of weather measurements made on Earth's surface

- upper-air report - wind, temperature, and humidity above Earth's surface

↳ radiosonde - package of instruments carried up by a weather balloon

- Doppler radar - radar that can detect precipitation
- can approximate wind speed

- isobars - lines that connect same pressure

- isotherms - lines that connect same temperature

- computer model - detailed computer programs that solve complex mathematical equations

A

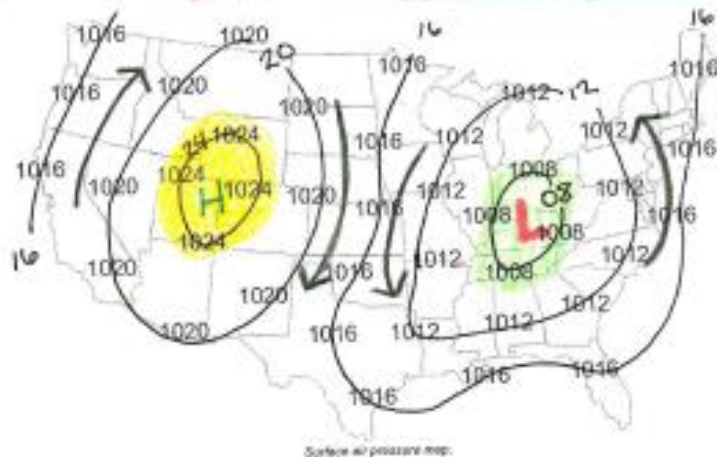
B

Isobar + Isotherm Maps

1/11/17

1/12/17

Isobar = Air Pressure



Isotherm = Air temperature

